

LEAF CHAINS

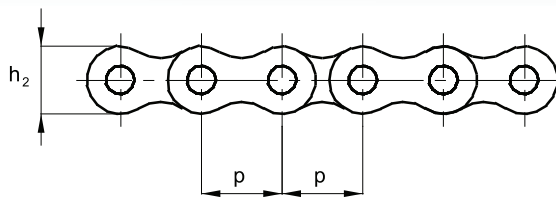
ČZ Standard

TRADE MARK ČZ	NOMINAL PITCH	PLATE COMBINATION	PIN DIAMETER	PIN LENGHT	INNER PLATE WIDTH	OUTER PLATE THICKNESS	CONNECT. PLATE THICKNESS	WEIGHT	BREAKING LOAD
	p		d2 max.	b4 max.	h2 max.	T2	T3	q	FB min.
	mm		mm	mm	mm	mm	mm	kg/m	N
05 B 2x2	8,0	2 x 2	2,31	5,60	6,20	0,80	0,80	0,12	4 600
05 B 4x4	8,0	4 x 4	2,31	9,20	6,20	0,80	0,80	0,24	8 000
05 B 2x3 STRONG	8,0	2 x 3	2,31	8,60	6,20	1,20	1,20	0,21	8 250
06 B 2x2*	9,525	2 x 2	3,28	6,70	8,20	1,00	1,20	0,26	9 500
06 B 4x4*	9,525	4 x 4	3,28	12,40	8,20	1,00	1,20	0,53	16 400
06 B 4x5*	9,525	4 x 5	3,28	13,50	8,20	1,00	1,20	0,60	18 590
06 B 5 x 6*	9,525	5 x 6	3,28	16,30	8,10	1,00	1,20	0,71	24 100
06 B 6 x 6*	9,525	6 x 6	3,28	17,60	8,20	1,00	1,20	0,80	26 500
06 B 6 x 6* LP	9,525	6 x 6	3,28	14,80	8,20	1,00	1,00	0,66	22 000
06 B 2x3 STRONG*	9,525	2 x 3	3,28	9,65	8,20	1,20	1,50	0,42	12 000
06 B 4x5 STRONG*	9,525	4 x 5	3,28	15,40	8,20	1,20	1,50	0,50	21 400
06 B 5x6 STRONG*	9,525	5 x 6	3,28	18,60	8,20	1,20	1,50	0,59	26 100
UF 944	9,525	4 x 4	3,58	12,00	7,60	1,20	1,20	0,47	22 000
UF 966	9,525	6 x 6	3,58	17,60	7,60	1,20	1,20	0,78	33 000
UF 988	9,525	8 x 8	3,58	23,00	7,60	1,20	1,20	0,97	41 300
08 B 2 x 2 STRONG	12,7	2 x 2	4,45	11,00	10,90	2,00	2,00	0,53	20 000
08 B 2 x 3 STRONG	12,7	2 x 3	4,45	13,10	10,90	2,00	2,00	0,66	20 000
08 B 3x4 STRONG	12,7	3 x 4	4,45	17,00	10,90	2,00	2,00	1,06	32 000
F 19V - 44	19,05	4 x 4	6,50	22,60	15,70	2,40	2,40	1,74	71 000
F 19V - 66	19,05	6 x 6	6,50	32,60	15,70	2,40	2,40	2,58	106 000

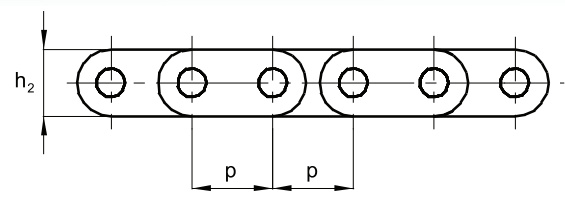
*Only with straight plates

LEAF CHAINS

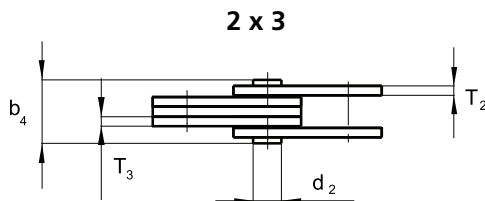
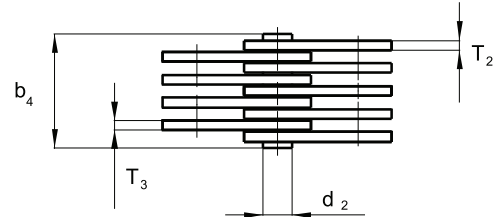
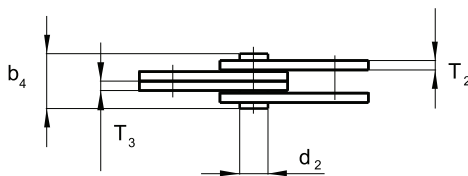
ČZ Standard



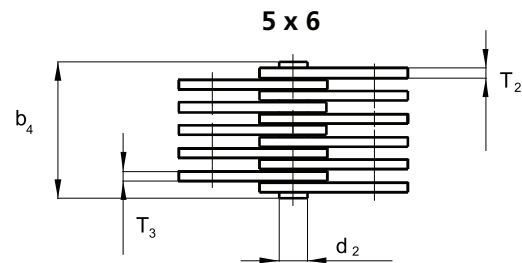
2 x 2



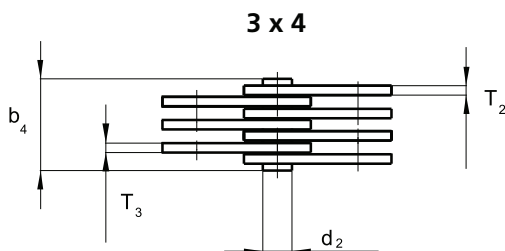
4 x 5



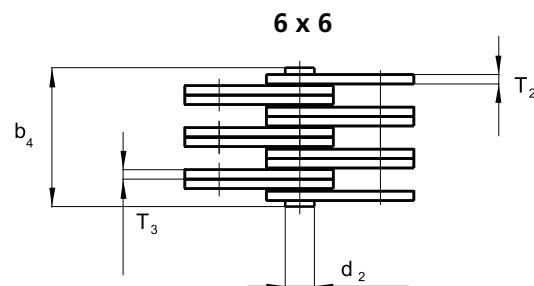
2 x 3



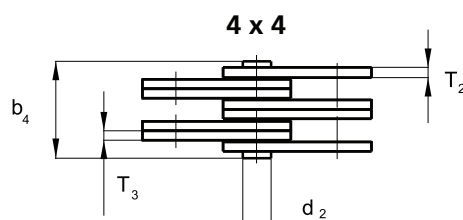
5 x 6



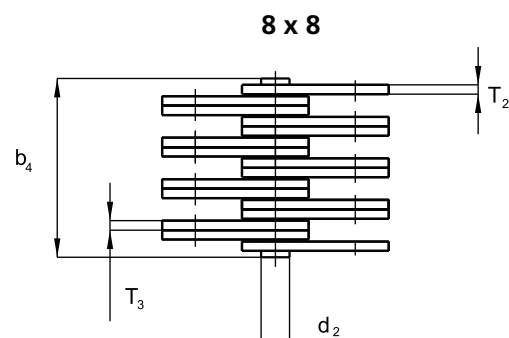
3 x 4



6 x 6



4 x 4



8 x 8